

**The program is now Windows 7 compatible and is much easier to install and use. The interface and displays are almost entirely in Numbered Pinyin as Windows 7 is poorly compatible with Visual Basic 6. Simplified Chinese is displayed as Web Encoded Pages and cannot be copied, cut or paste but can be printed and displayed in the default browser. One no longer needs to modify Regional Settings as this doesn't work anyway in Windows 7.**

**The Voice files are are human (not TTS) and better than Versions 1 or 2. Spoken phrases can be saved and retrieved. If desired, one can copy them to a MP3 player. The pronunciation is entirely concatenated from the Pinyin.**

**The Medical functions haven't changed except with the unavailability of Simplified Chinese.**

**The program remains Freeware and is open source. If there are copywrite issues that I am unaware of, I feel the program constitutes "fair use". The installation program includes all required files and is about 60 MB which shouldn't be a problem with broadband. Updates will be available as time goes on as much smaller installable's.**

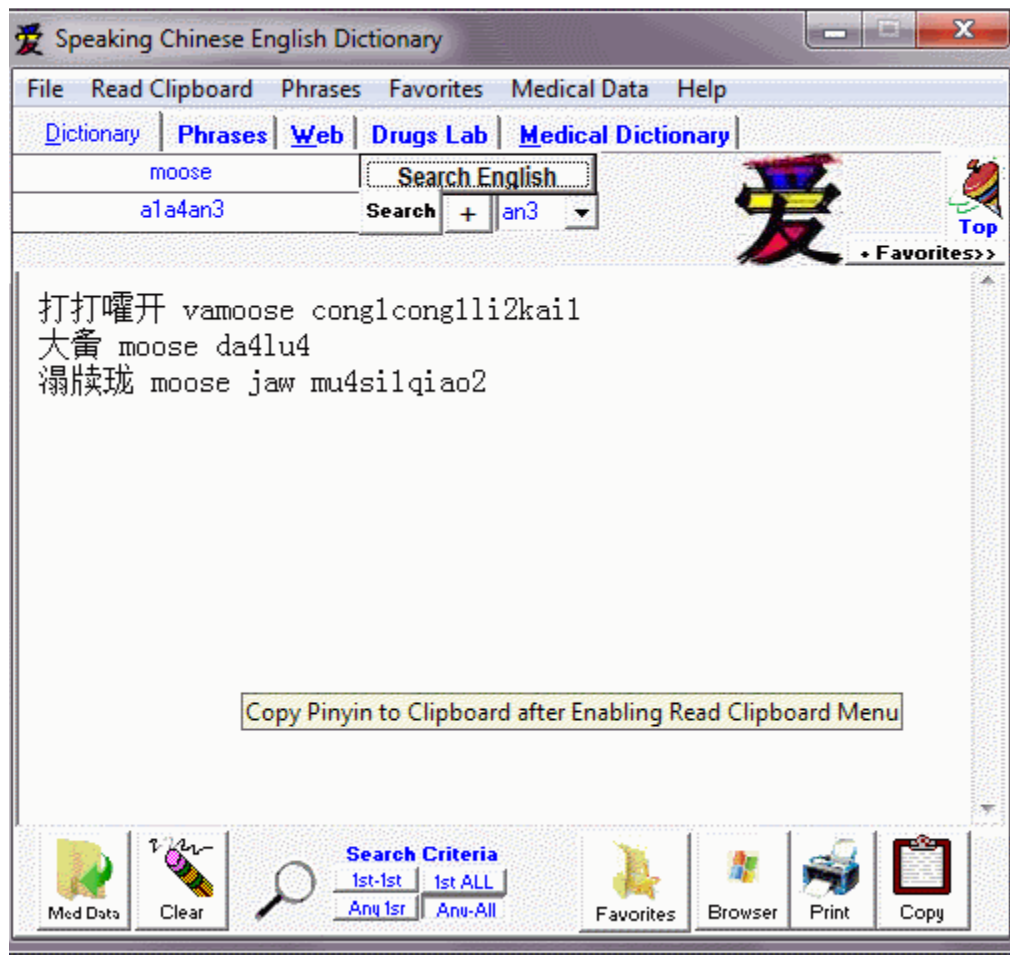
**You may [contact me](#) if you need the program on a CD or for comments or support. The program has not been tested by anyone that I am aware of besides myself.**



Depending on your CPU, the time to load the phrases and files is variable.



The main interface. Most of the options are duplicated in the menus.



One may search either in English or Pinyin.

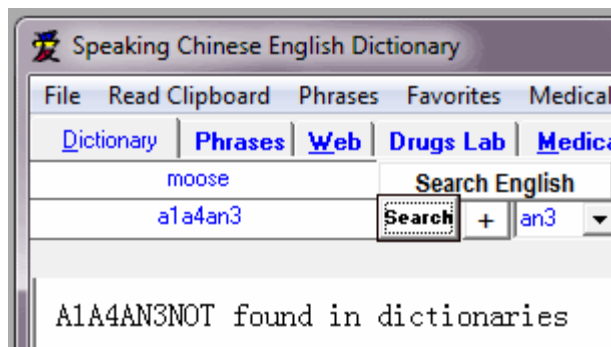
To pronounce the Chinese, Copy only the Numbered Pinyin in the Main Window after Selecting it or Click the Copy Button.

If the Read Clipboard Option is turned on, pronunciation will occur.

Favorites are saved from the Clipboard also on this tab.



The numbered Pinyin can only be entered from the drop-down box and added with the + button.



Med Data will display any saved Medical Data (below) and edited using the menus above.

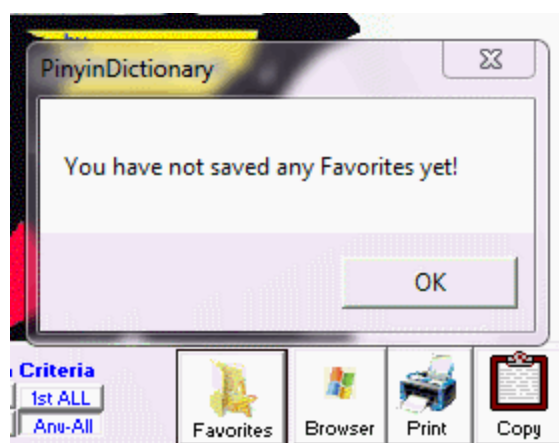
Clear erases the Main Window.

Search criteria may be customized.

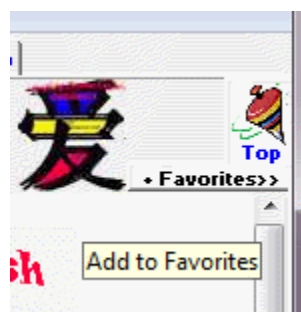
Saved Favorites can be recalled and edited using the menus above.

The Main Window is a webpage and it can be expanded in the default browser.

Printing of the page is also a feature.

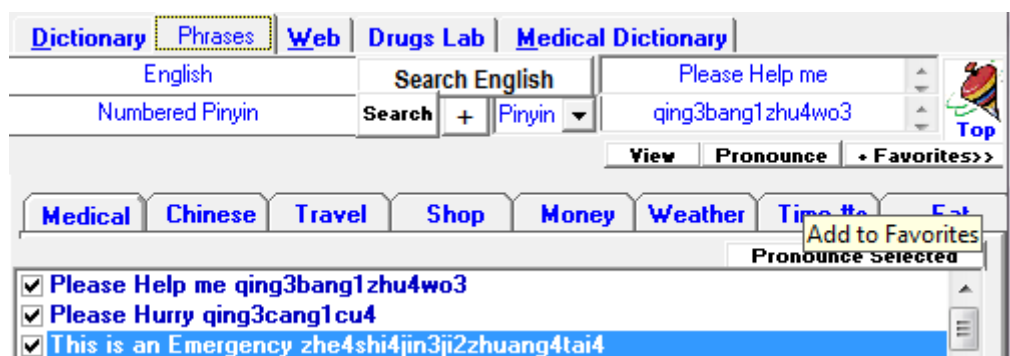


The process of Saving Favorites is different depending on the tab selected.

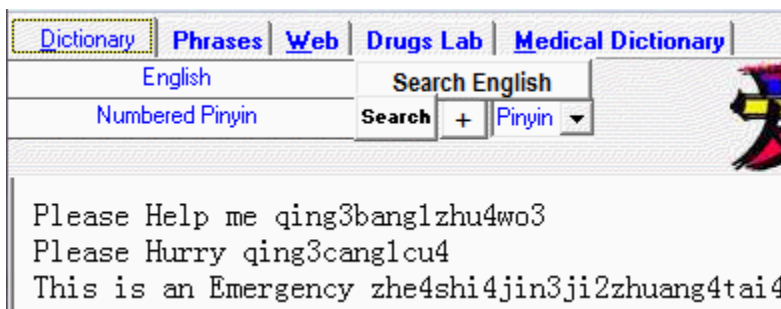
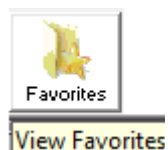


On the Dictionary Tab one must first Copy Selected text to the Clipboard before adding it to Favorites.

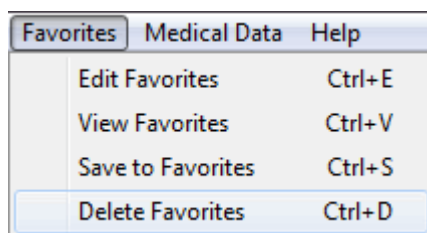
Simplified Chinese will not be saved from the Clipboard to the Favorites.



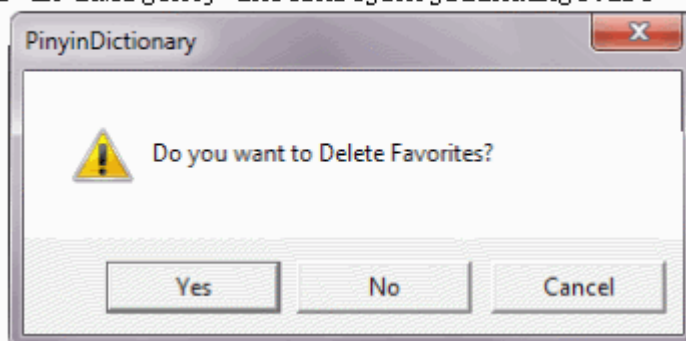
On the Phrases Tab one must Select the Phrases using the multicheck boxes before adding them to Favorites.



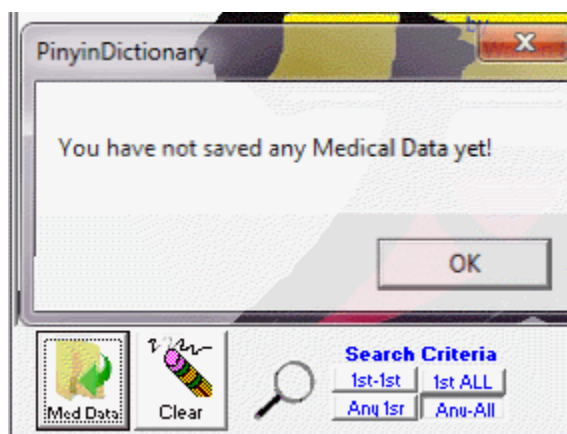
One may view the Favorites in the Main Window on the Dictionary Tab.



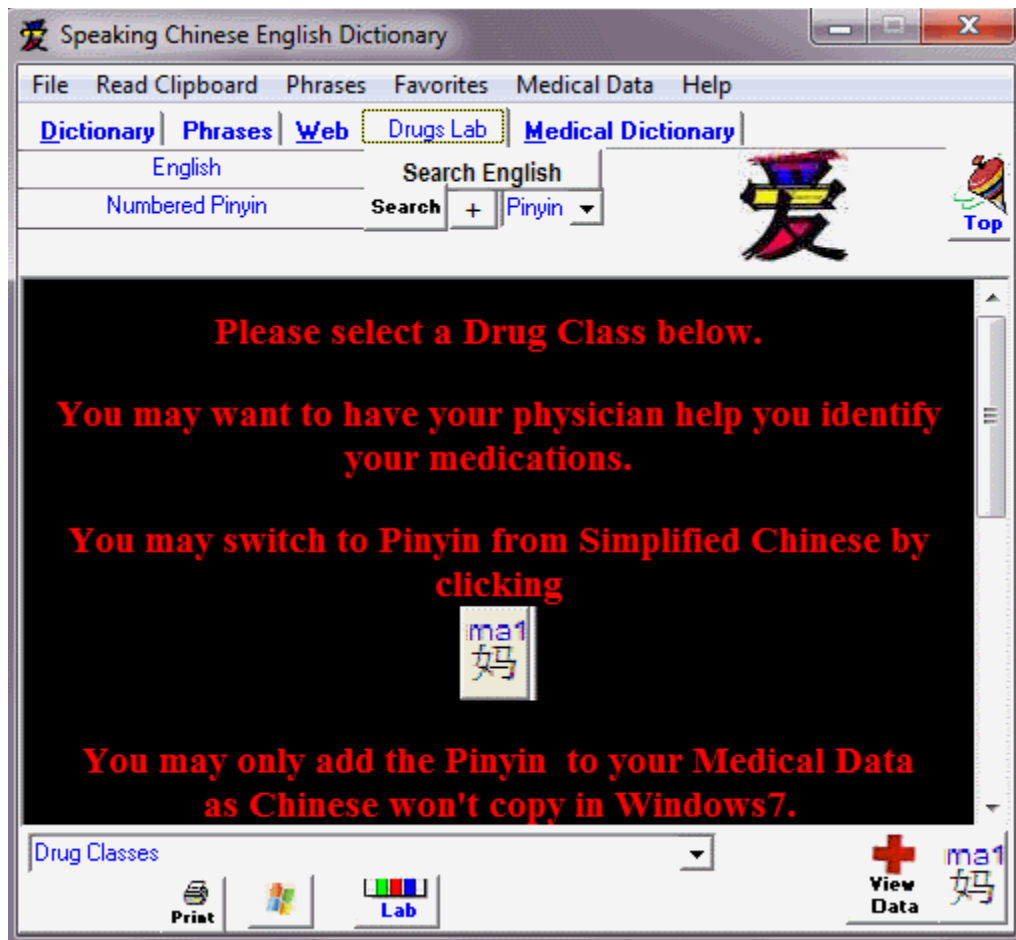
s an Emergency zhe4shi4jin3ji2zhuang4tai4



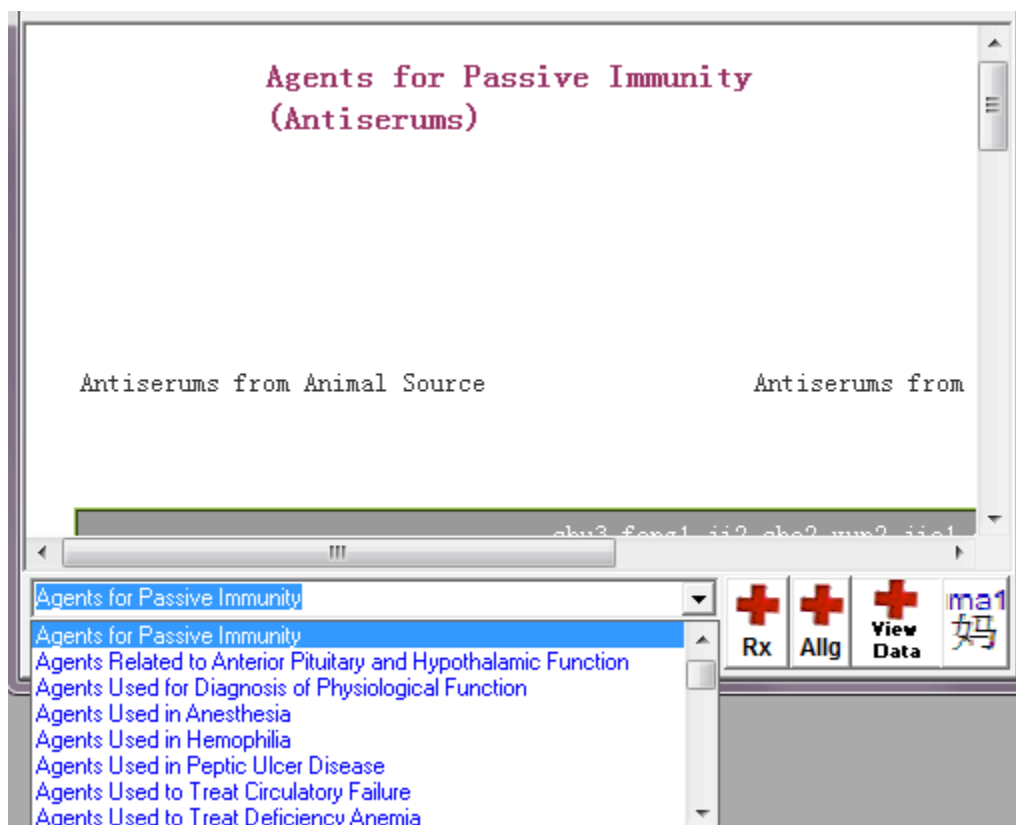
The drop-down menu allows deleting and editing of the Favorites.



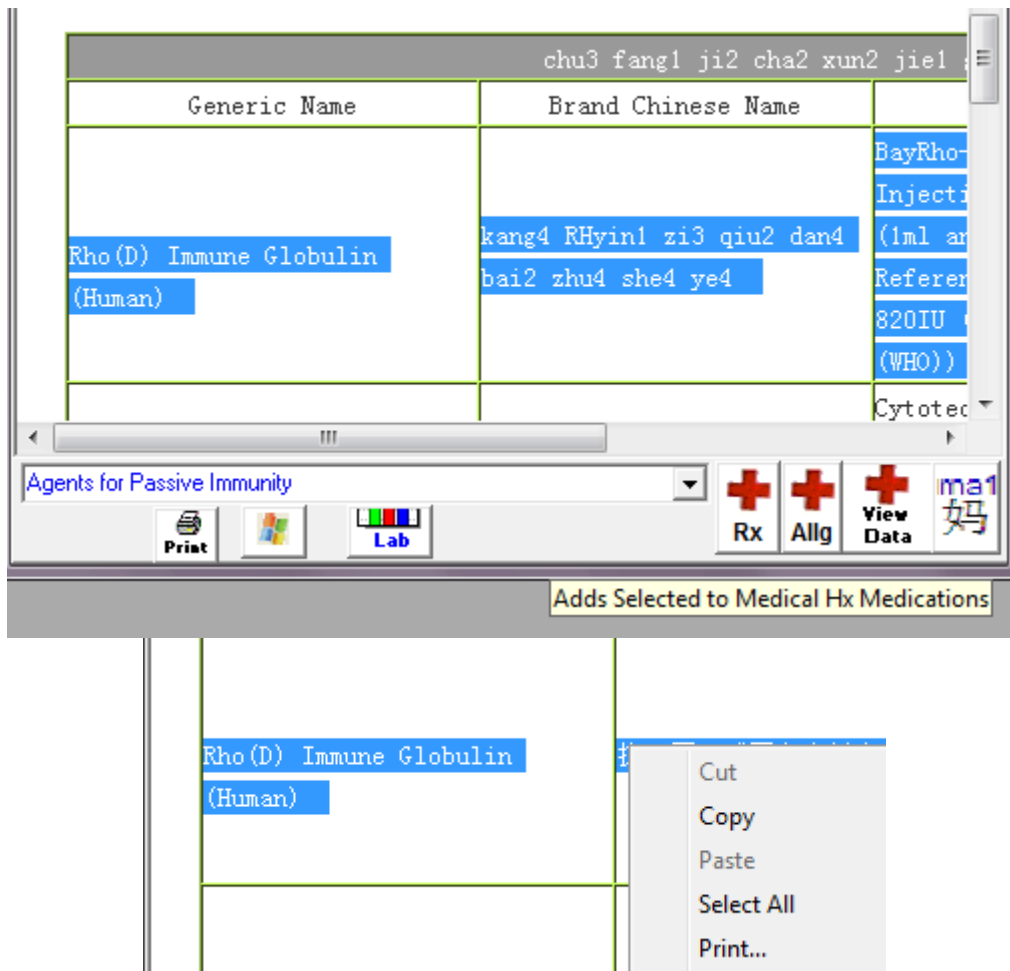
Saving Medical Data also depends on the Tab and has the same limitation with the Clipboard and Simplified Chinese.



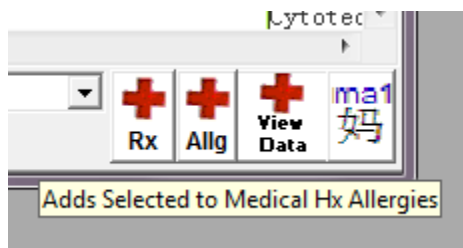
The Phrases, Drugs Lab and Medical Dictionary Tabs support saving Medical Data.



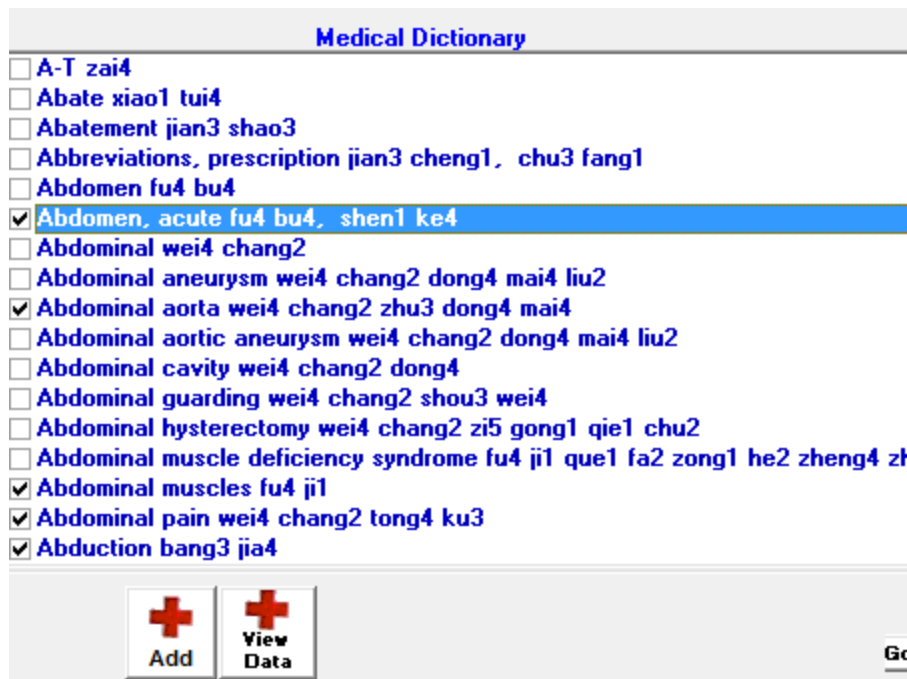
One must first select a Drug Class in the drop-down box.



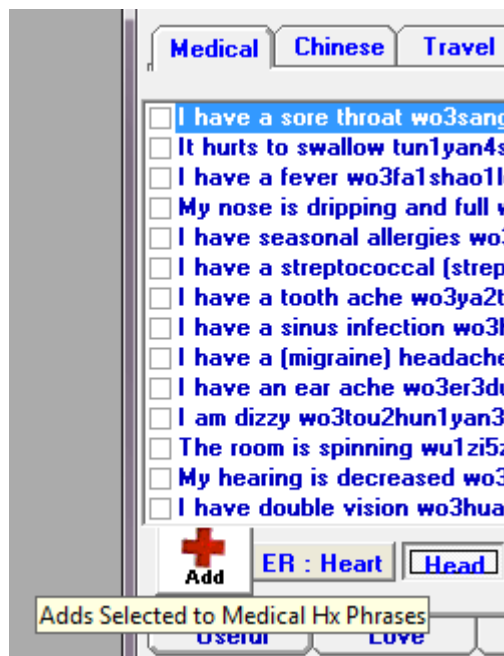
Highlight or Select the desired Drug with its Pinyin and Copy it to the Clipboard.



Then Add it to  
**Rx** (the medications that you are taking) or  
**Allg** (drugs that you are allergic to.)



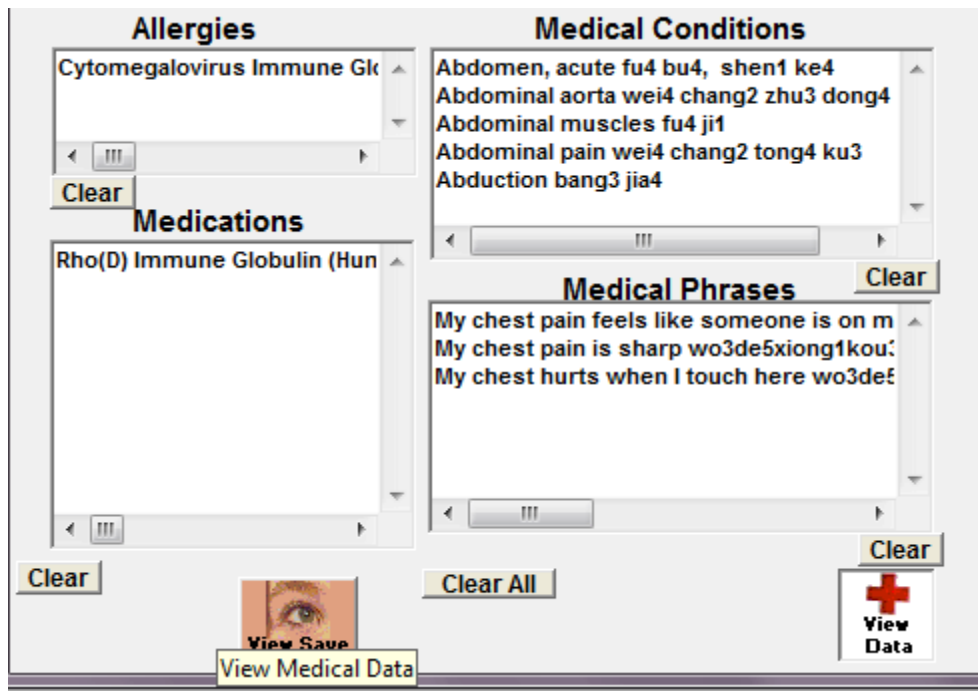
One may add specific medical conditions from the Medical Dictionary Tab by Selecting them (check-boxes) and Adding.



The same option is available from the Medical Phrases List.







The Medical Data can be edited in the View Data Window.  
It can be Saved and then recalled from the Main Dictionary Tab.



One can convert the Pinyin to Simplified Chinese on the Drug Classes

but this format cannot be added to Medical Data.

处方集查询结果		
Generic Name	Brand Chinese Name	
Rho(D) Immune Globulin (Human)	抗RH因子球蛋白注射液	BayRho- Injecti (≥1ml Referer 820IU (WHO))
		Cytotec proteir

Printing these pages is advised if Chinese Characters are needed.

## 化驗報告正常值

項目	分類	正常值
ALT (SGPT) 谷丙轉氨酉每		5 - 38
AMA 原漿微粒甲狀抗體		<1 : 100
APTT部分凝血質時間		25 - 43

Agents for Passive Immunity

Lab

Displays Normal Lab values

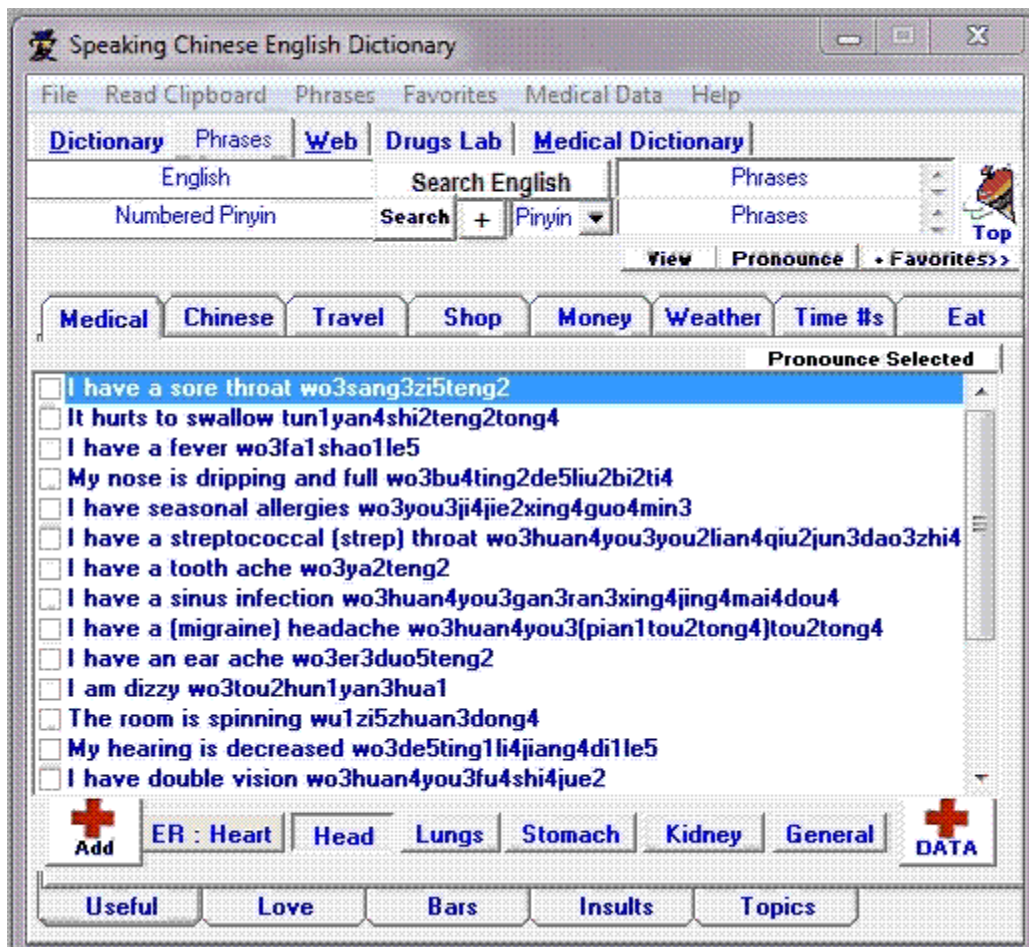
Agents for Passive Immunity

Print

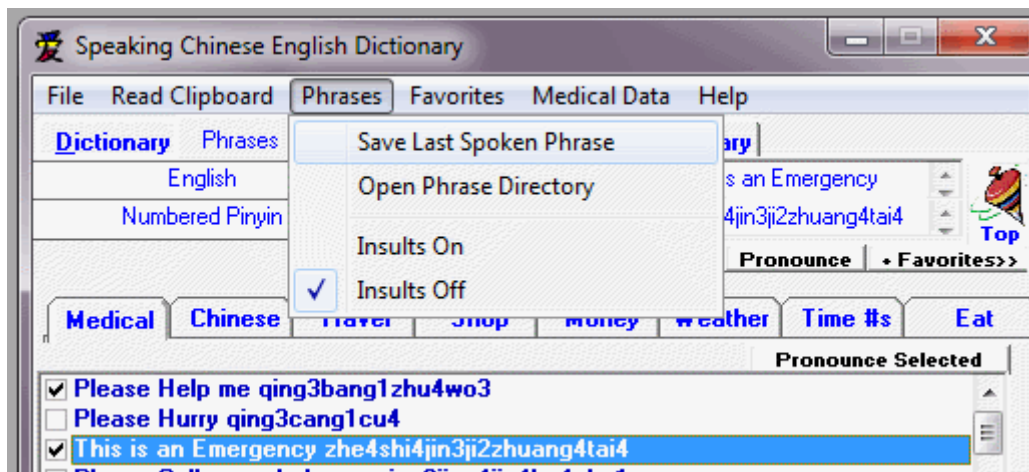
Lab

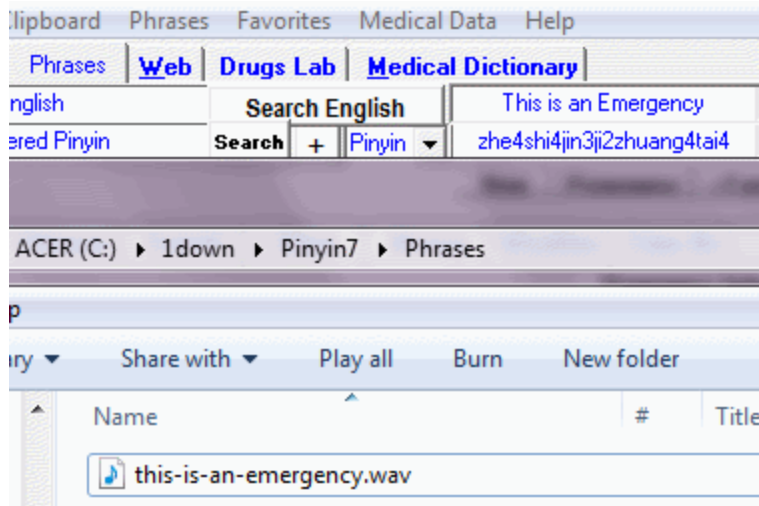
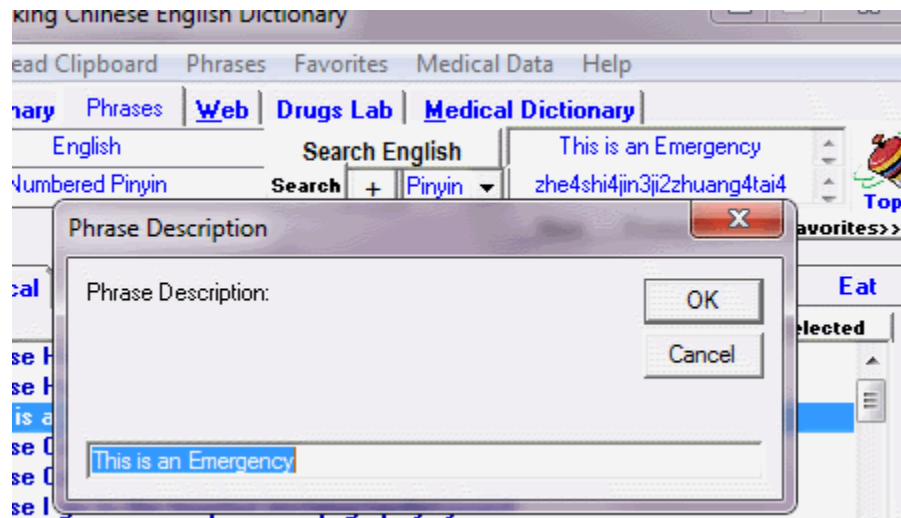
Print to Fill Out Especially Lab

I suggest one print out a copy of the Lab Form and write in your values if need be.

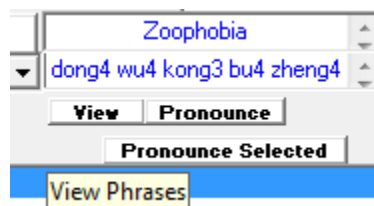


Multiple sets of Conversational Phrases can be added to Favorites or Medical Data.  
Insults are disabled by default but can be Enabled from the Menu.





Phrase Pronunciation Files can be archived and recalled. They are saved as .wav files which can be converted to .mp3's and added to a portable player.



Zoophobia 动物恐怖症 dong4 wu4 kong3 bu4 zheng4

Any of the phrases displayed in the above boxes may be Viewed in the Main Dictionary Tab.